

# Oh I Do Like To Be Beside The Seaside!

This topic will develop the children's **Geography** skills by encouraging them to think about holiday destinations and in particular, the features of UK Seaside resorts. We will learn about lighthouses, the beach, cliffs and tourist attractions. We will look at photos of seaside resorts from the perspective of a seagull. We will use aerial photos to identify and compare human and physical geographical features of seaside resorts.

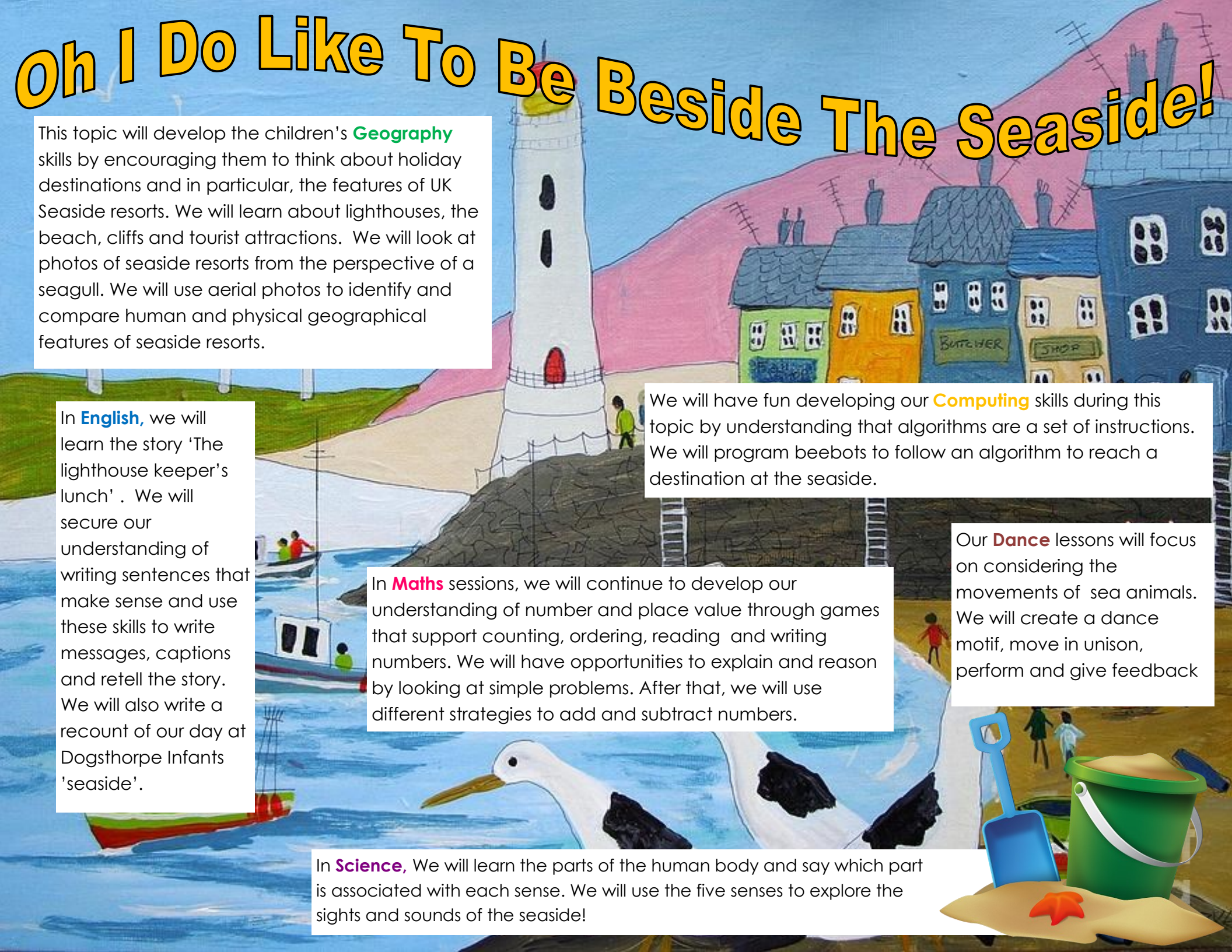
In **English**, we will learn the story 'The lighthouse keeper's lunch'. We will secure our understanding of writing sentences that make sense and use these skills to write messages, captions and retell the story. We will also write a recount of our day at Dogsthorpe Infants 'seaside'.

In **Maths** sessions, we will continue to develop our understanding of number and place value through games that support counting, ordering, reading and writing numbers. We will have opportunities to explain and reason by looking at simple problems. After that, we will use different strategies to add and subtract numbers.

We will have fun developing our **Computing** skills during this topic by understanding that algorithms are a set of instructions. We will program beebots to follow an algorithm to reach a destination at the seaside.

Our **Dance** lessons will focus on considering the movements of sea animals. We will create a dance motif, move in unison, perform and give feedback

In **Science**, We will learn the parts of the human body and say which part is associated with each sense. We will use the five senses to explore the sights and sounds of the seaside!



# Topic Tasters

## Useful Websites

<https://www.bbc.co.uk/teach/class-clips-video/william-whiskerson-seaside-town/zd88qp3> - William the Mouse visits a seaside

<https://www.squizzes.com/fun-facts-about-the-seaside/> - Fun facts about the seaside

## The United Kingdom

The United Kingdom is made up of Northern Ireland, England, Scotland and Wales.



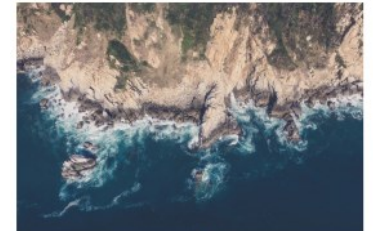
## Geographical Features of the Seaside



**cliffs**



**lighthouse**



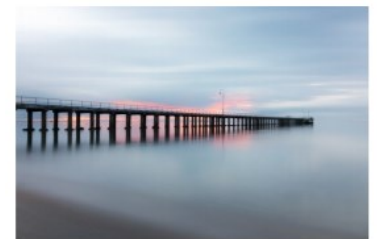
**coastline**



**harbour**



**sand dunes**



**pier**