



# Dogsthorpe Infant School COVID procedures



## School



Staff, must not attend school if they have COVID symptoms.



Follow an increased schedule of cleaning and hand washing throughout the day.



Provide a free daily packed lunch to ALL those attending.



Teach in a way that promotes social distancing (e.g. children not sitting face to face).



Inform parents/carers if anyone in the group displays symptoms of COVID and take necessary action if a positive case is confirmed.



Are **not** required to wear face masks, but trained adults will use **PPE** if COVID symptoms are identified.



## Parents

Should not send child to school if they have COVID symptoms.



Check child's temperature before coming to school in morning.

Only **one** parent / carer to enter school site to drop off and collect (avoid bringing siblings unless no other option please, no teenagers).



Stick to the allocated drop off / collection times. Please be punctual.



Follow our one-way system - markings will direct you.



Avoid using the office—phone or email us instead.

Do **not** 'gather' on school site—**keep 2 metres way from other families.**

SOCIAL DISTANCING

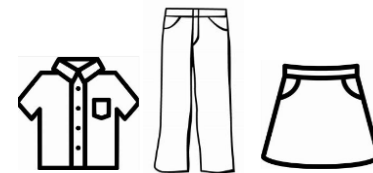


## Children

Not attend school if they or family member have COVID symptoms.



Attend each day if well and arrive on time.



Children will wear school uniform. Please ensure this is cleaned regularly.



Will only bring in lunchbox, water bottle, PE kit and book bag. **ALL MUST BE NAMED.**



**Not wear face masks.**